



### 1. WHAT YOU NEED

- ESCORT Console Software
- iLog data logger
- Logger interface (Product code: EA-INT or EA-INT-U)
- External sensors (for loggers with external sensor connectors only)

### 2. INSTALLING THE SOFTWARE

- Start your computer and insert your ESCORT Console software into your CDROM drive, or download ESCORT Console from our website [www.escortdls.com](http://www.escortdls.com).
- If downloading via the Internet, a popup will appear. Click the **RUN** button.
- The software install wizard will appear. **Select the language required** to view the install wizard and click **Next**.
- The **licence agreement** will appear. Read the conditions and if accepted click **Next**.
- A screen will appear displaying information regarding ESCORT for Windows and ESCORT User Administration Software. If you are using either of these software packages please read the displayed information and click **Next**. **If you are not using either of the stated packages just click Next**.
- Enter ownership and user details relating to your software and click **Next**.
- Select the languages you require your software to be published in and click **Next**.
- If you are running ESCORT User Administration Software please follow the instructions displayed. If you are not running ESCORT User Administration software click **Next**.
- ESCORT Console software is now successfully installed on your computer.

### 3. CONNECTING LOGGER TO PC

The iLog requires an interface to communicate with your PC. Currently ESCORT DLS offers two types of interface:

1) Standard interface (EA-INT)



2) Universal interface (EA-NT-U).



Both interfaces have a DB9 (9 pin) connector and require your PC to have a RS232 serial port.

If you prefer to use a USB port on your PC, please purchase a USB to DB9 connector cable from your distributor or local electronics store.

#### Connecting DB9 (9 pin) connector to your computer

Plug your logger interface DB9 connector into the serial port located at the rear of your PC.



Tighten the screws located either side of the connector, but **Do not over tighten**.

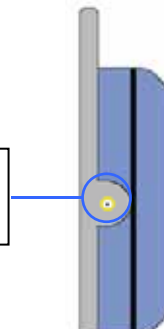
#### Connect logger to interface

Attach your iLog logger to the interface, ensuring that the contacts on the base of the logger match the pins on the interface.



#### Connecting a sensor

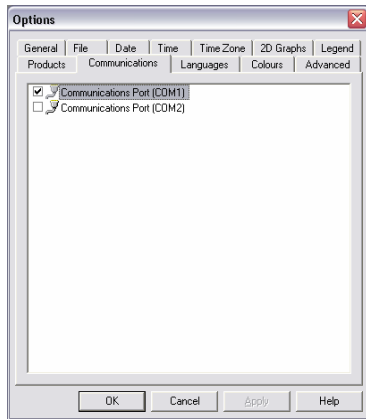
iLog sensor connecting socket. Insert sensor connector to add sensor to your iLog logger



## 4. CONSOLE SERIAL PORT SETUP

Once you have successfully installed your Console software, it can automatically check how many COM ports are located on your computer (including USB).

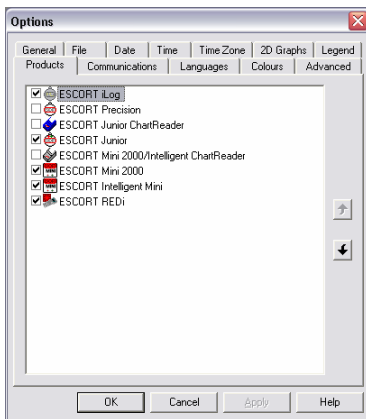
- Select the menu options **EDIT > OPTIONS > COMMUNICATIONS** and choose the relevant COM Port and click **OK**.



## 5. CONSOLE PRODUCT SETUP

You are required to select the ESCORT products that you want to communicate with.

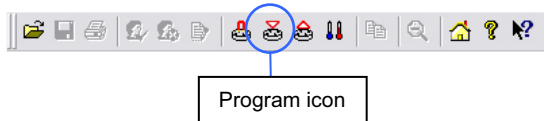
- Select the menu options **EDIT > OPTIONS > PRODUCTS** and select the relevant Products listed and click **OK**.



## 6. PROGRAMMING AN iLog

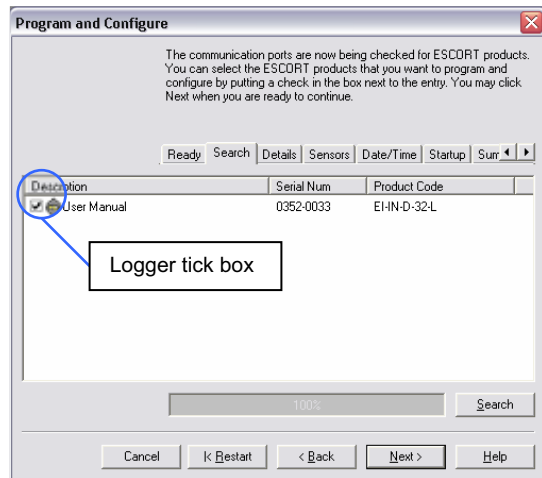
Start your computer and open your ESCORT Console software by selecting the ESCORT Console icon located on your desktop, or via the following menu options **START > ALL PROGRAMS > ESCORT > CONSOLE**.

- Select the Program & Configure icon from the Console taskbar, or select **Action > Program & Configure** from the dropdown menu or **Control + P**.



- The Program & Configure wizard will open and an information screen will appear. Click **Next**.

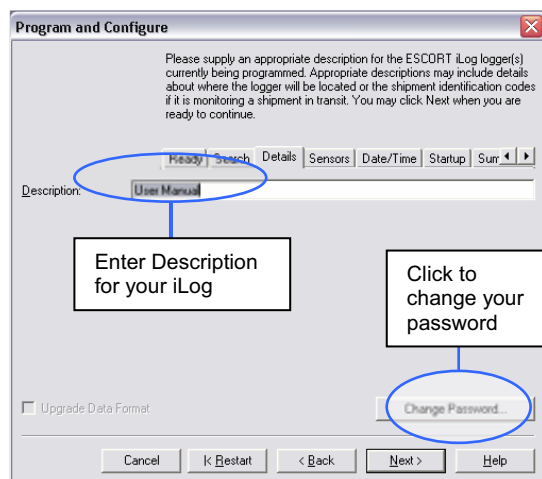
- The next screen to appear is the search screen. If your logger is password protected the tick box will be empty. Select the tick box and the password window will appear. If the tick box is already checked click **Next**.



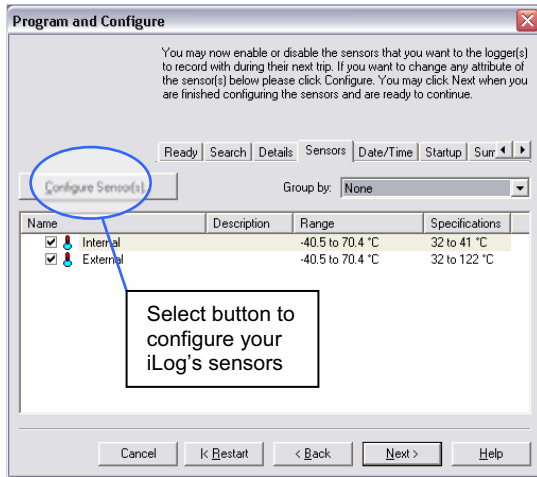
- If your logger is password protected, enter the correct password and click **OK**.



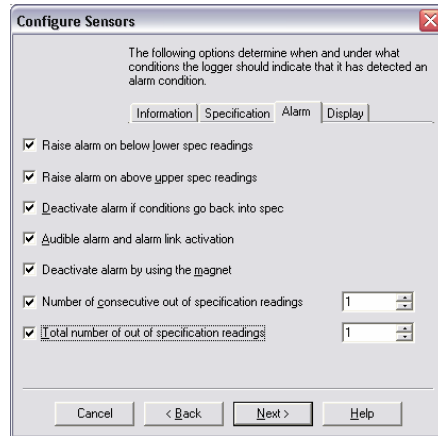
- The next screen to appear is the details screen. Here you can add a description to your iLog and alter your password settings. After entering the relevant details click **Next**.



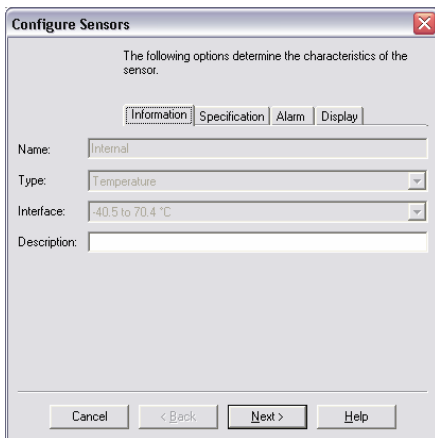
- The next screen to appear is the sensors screen. Here you can configure your iLog's sensors and select and deselect sensors by clicking the **Configure Sensor(s)** button. After entering the relevant details click **Next**.



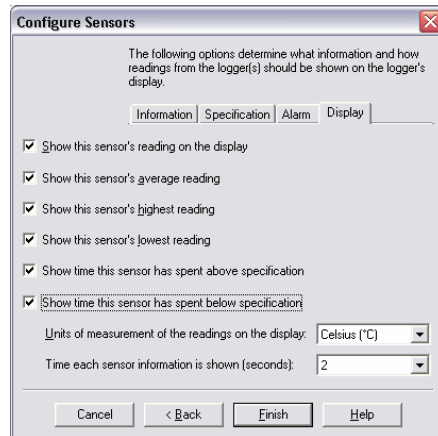
- Enter a description for the sensor that you wish to configure and click **Next**.



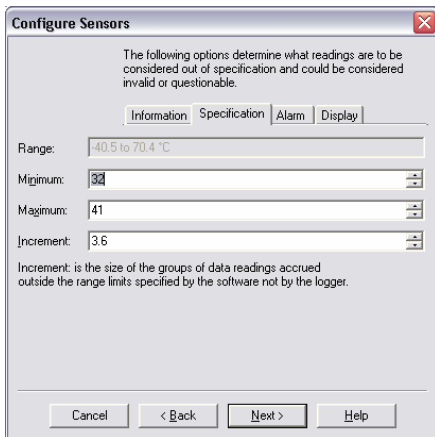
- Select the appropriate tick boxes relating to what you would like displayed on the loggers screen and click **Next**.



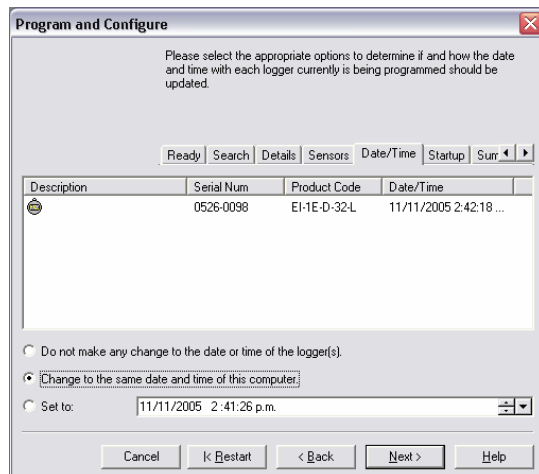
- Enter a minimum and maximum temperature for the sensor and the increment in which to display the readings and click **Next**.



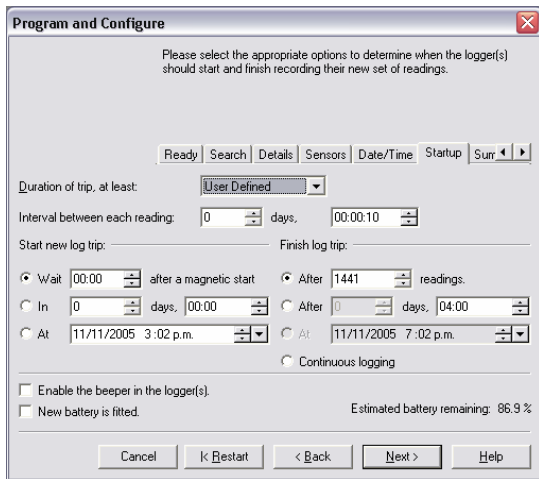
- The next screen to appear is the date/time screen. Here you can opt to leave the time and date already saved in your iLog, change to your computers date and time or specify a date and time. After entering the relevant details click **Next**.



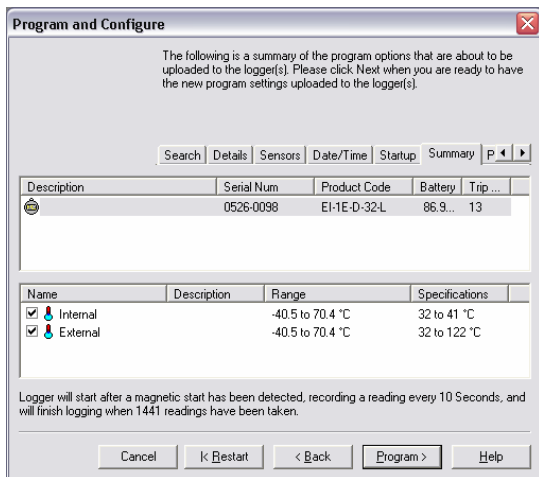
- Select the appropriate tick boxes and enter the alarm settings that your require and click **Next**.



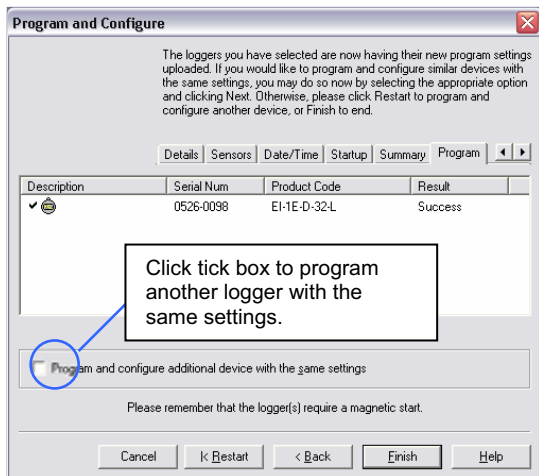
- The next screen to appear is the startup screen. Here you can enter settings regarding trip duration, logging interval, start date and time, finish date and time and enable the loggers beeper. This screen also displays your iLog's battery status. After entering the relevant details click **Next** (see next page).



- The next screen to appear is the Summary screen. This screen displays a basic summary of the setting you have chosen to program into your iLog. Click **Program**.



The next screen to appear is the Program screen. This screen allows you to program another logger with the same settings. Select the 'program and configure additional devices with the same settings' tick box to program another logger and click **Next** or click the **Finish** button.

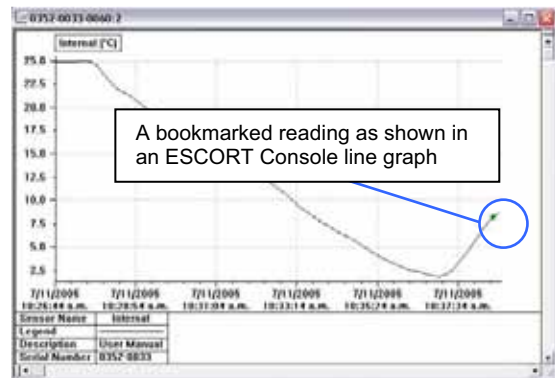


Click tick box to program another logger with the same settings.

## 7. BOOKMARKING iLog READINGS

- A bookmark is an identification method used to locate a reading or time regarding an action that has taken place (e.g. the opening of a freezer door). iLog users have the ability to 'bookmark' logger readings by swiping a magnet over the iLog's label. Once your iLog is downloaded, your ESCORT Console software will highlight bookmarked readings using the colour **green**.

| Index | Elapsed Time | Date      | Time          | Internal (°C) |
|-------|--------------|-----------|---------------|---------------|
| 63    | 629          | 2/11/2005 | 18:37:04 a.m. | 1.8           |
| 64    | 630          | 2/11/2005 | 18:37:14 a.m. | 2.1           |
| 65    |              |           |               |               |
| 66    |              |           |               |               |
| 67    |              |           |               |               |
| 68    |              |           |               |               |
| 69    |              |           |               |               |
| 70    | 690          | 2/11/2005 | 18:38:14 a.m. | 6.7           |
| 71    | 700          | 2/11/2005 | 18:38:24 a.m. | 7.5           |
| 72    | 710          | 2/11/2005 | 18:38:34 a.m. | 8.7           |
| 73    | 720          | 2/11/2005 | 18:38:44 a.m. | 9.7           |

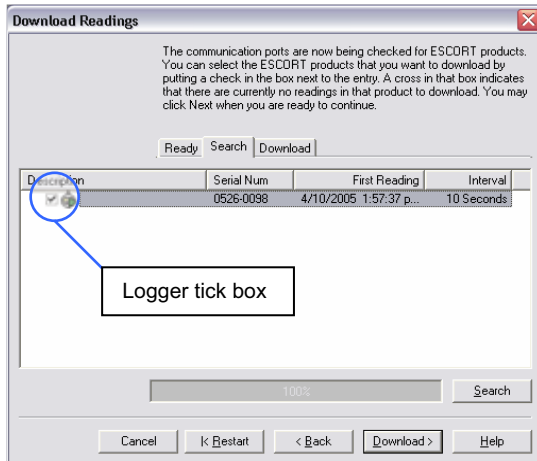


## 8. DOWNLOADING AN iLog

- Start your computer and open your ESCORT Console software by selecting the ESCORT Console icon located on your desktop, or via the following menu options **START > ALL PROGRAMS > ESCORT > CONSOLE**.
- Select the Download icon from the Console taskbar, or select **Action > Download** from the dropdown menu or **Control + D**.



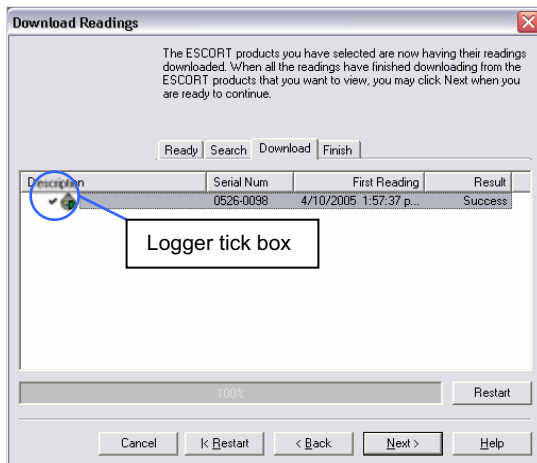
- The Download wizard will open and an information screen will appear. Click **Next**.
- The next screen to appear is the search screen. If your logger is password protected the tick box will be empty. Select the tick box and the password window will appear. If the tick box is already checked click **Next** (see next page).



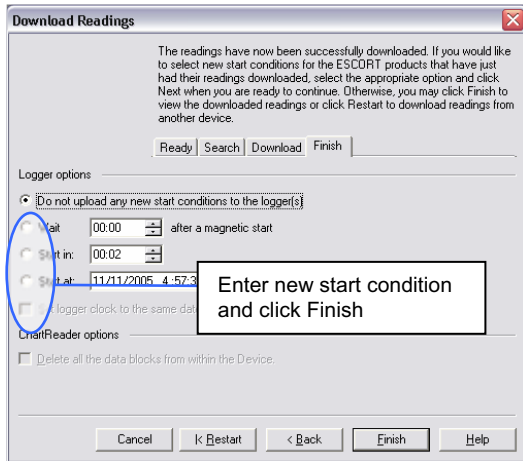
- If your logger is password protected, enter the correct password and click **OK**.



- The next screen to appear is the Download screen. Check that your logger details displayed within this screen are correct and click **Next**.

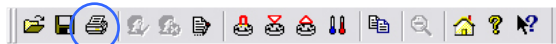


The next screen to appear is the Finish screen. Here you can enter new start commands. After entering the relevant start conditions click **Finish**.



## 9. PRINTING A FILE

- Select the Print icon from the Console taskbar, or select **File > Print** from the dropdown menu or **Control + P**.



Print icon

- If you have several printers to choose from or want to change your printing preferences (e.g. change your printing layout from portrait to landscape), select **File > Print Setup** or **Control + R**.
- To preview the layout of the file you are about select **File > Print Preview** or **Control + V**.

## 10. SAVING A FILE

- Select the Save icon from the Console taskbar, or select **File > Save** from the dropdown menu or **Control + S**.



Save icon

- If required to save additional copies of a file select **File > Save As** from the dropdown menu or **Control + A**.

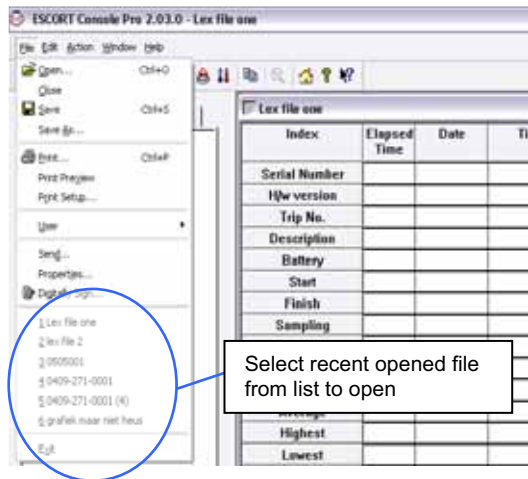
## 11. OPENING A SAVED FILE

- Select the Open File icon from the Console taskbar, or select **File > Open** from the dropdown menu or **Control + O**.



Open icon

- The six most recently opened files are saved in a list located at the bottom of the file menu. You can open these files by selecting the correct filename from this list.



### FURTHER INFORMATION

For further information please contact your local distributor or visit our website [www.escortdls.com](http://www.escortdls.com)