



**ESCORT Intelligent Mini
Data Logger**

Quick Reference Guide

Thank you for purchasing an ESCORT dls product. Please read this quick reference guide before using this unit.

www.escortdls.com

© ESCORT Data Logging Systems Ltd 2006

1. WHAT YOU NEED

- ESCORT Console Software
- Intelligent Mini data logger
- RS232 to DB9 or RS232 to USB cable
- REDi Intelligent Receiver

2. INSTALLING THE SOFTWARE

- Start your computer and insert your ESCORT Console software into your CDROM drive, or download ESCORT Console from our website www.escortdls.com.
- If downloading via the Internet, a popup will appear. Click the 'RUN' button.
- The software install wizard will appear. **Select the language required** to view the install wizard and click 'Next'.
- The **licence agreement** will appear. Read the conditions and if accepted click **Next**.
- A screen will appear displaying information regarding ESCORT for Windows and ESCORT User Administration Software. If you are using either of these software packages please read the displayed information and click **Next**. **If you are not using either of the stated packages just click Next.**
- Enter ownership and user details relating to your software and click **Next**.
- Select the languages you require your software to be published in and click **Next**.
- If you are running ESCORT User Administration Software please follow the instructions displayed. If you are not running ESCORT User Administration software click 'Next'.
- ESCORT Console software is now successfully installed on your computer.

3. CONNECTING LOGGER TO PC

The Intelligent Mini only requires a standard RS232 to DB9 or RS232 to USB cable to communicate with your PC:

1) RS232 to DB9 cable.



2) USB to RS232 cable (JA-USB-SER).



Both of these cables are available for purchase from your local electronics store. Alternatively you are able to purchase the USB to RS232 cable from your ESCORT DLS distributor.

Connecting the DB9 (9 pin) cable to your computer

Plug the DB9 connector into the serial port located at the rear of your PC.

Tighten the screws located either side of the connector, but **Do not over tighten.**



Connecting the USB / RS232 cable to your computer

There are three places on your PC where you may find a USB port. These are; The rear of your PC, on the front panel below the on button and on the side of some LCD screens.



Rear

In some instances you may locate a USB connector on your keyboard, or may have a USB junction box.



Front

Once you have attached the USB cable to your PC **you must install the required drivers.** The drivers can be found on a disc supplied with the cable or downloadable via our website.

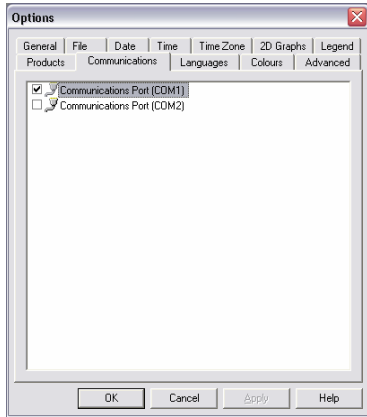


Screen

4. CONSOLE SERIAL PORT SETUP

Once you have successfully installed your Console software, it can automatically check how many COM ports are located on your computer (including USB).

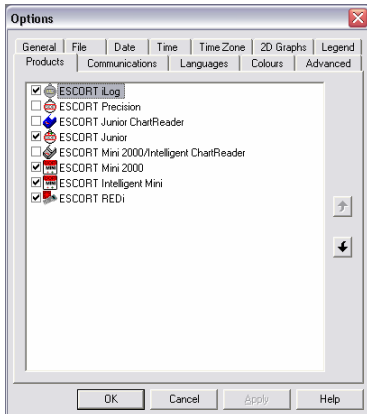
- Select the menu options **EDIT > OPTIONS > COMMUNICATIONS** and choose the relevant COM Port and click **'OK'**.



5. CONSOLE PRODUCT SETUP

You are required to select the ESCORT products that you want to communicate with.

- Select the menu options **EDIT > OPTIONS > PRODUCTS** and select the relevant Products listed and click **'OK'**.



6. PROGRAMMING an Intelligent Mini

Start your computer and open your ESCORT Console software by selecting the ESCORT Console icon located on your desktop, or via the following menu options **START > ALL PROGRAMS > ESCORT > CONSOLE**.

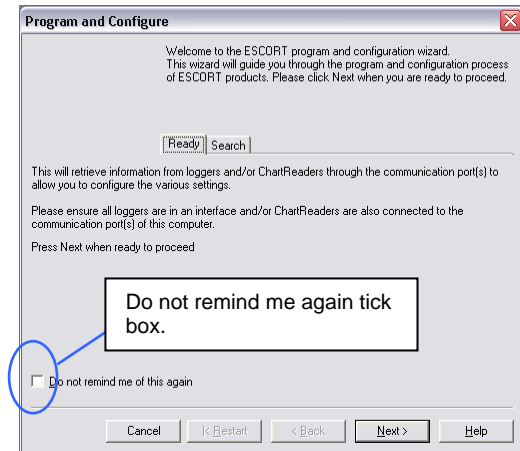
- Select the Program & Configure icon from the Console taskbar, or select **Action > Program & Configure** from the dropdown menu or **Control + P**.



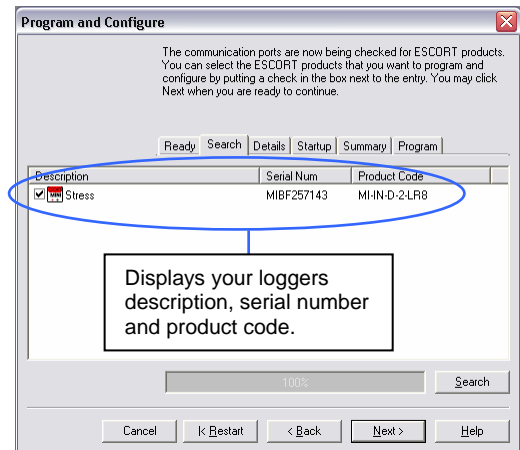
Program icon

- The Program & Configure wizard will open and an information screen will appear. Click **'Next'**.

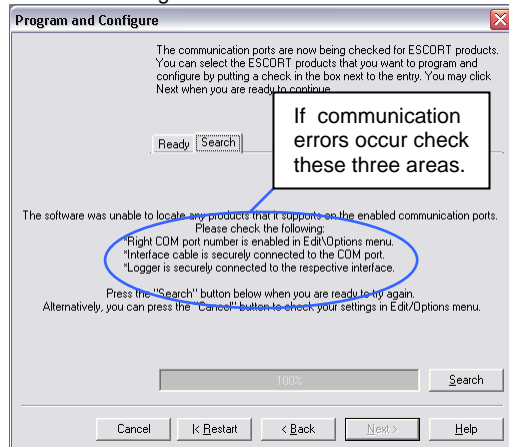
- The first window to appear on the program and configure wizard is a general information window. Please read this window and if you do not wish to see this window again when programming select the **'Do not remind me again'** tick box.



- The second window to appear is search screen. Once your software has located a logger the window will display the loggers' description, serial number and product code. To proceed select the **'Next'** button.

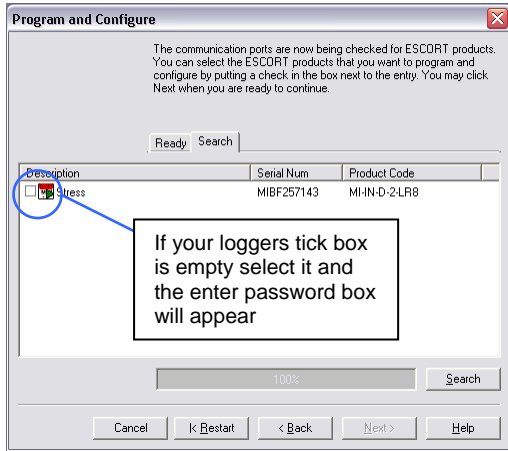


- If your software is unable to locate a logger due to communication problems the following message will be displayed. Check all three bullet points displayed in this message.



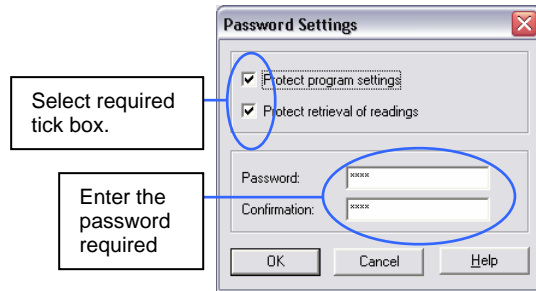
Password protection

If your logger has been issued a password to your logger tick box will appear unchecked. If you select your loggers tick box the enter password box will appear.



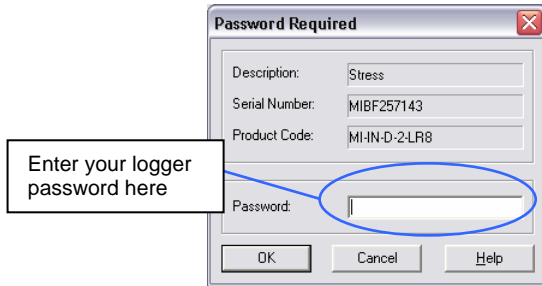
Adding a password

It is possible to add a password to protect your logger upon programming and download. To enter a password first select the tick box for program and/or download and enter the designated password in the spaces provided.

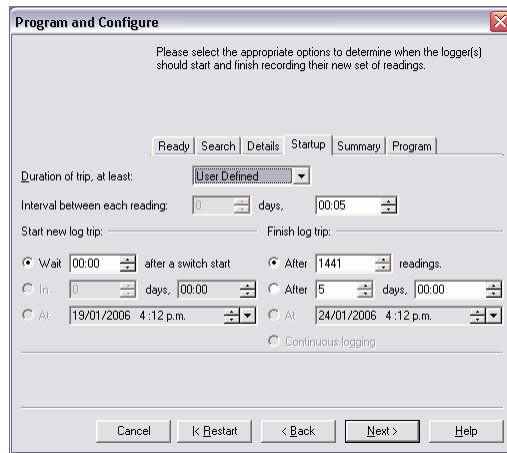


- The next window to appear is the **'Startup'** window. Here you are able to enter your logger's trip duration, logging interval and start finish conditions. Please make the required selections and select click the **'Next'** button.

Enter the password in the field provided and select the **'OK'** button.

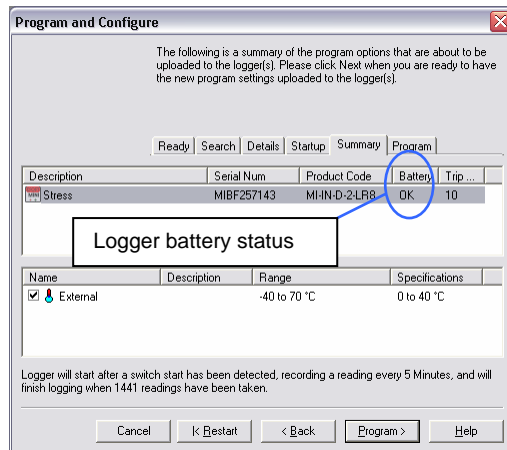
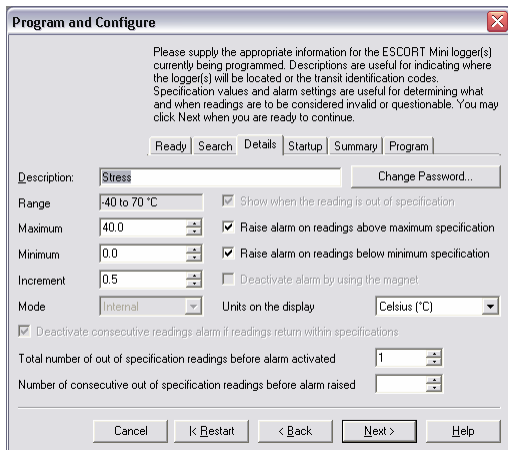


- The next window to appear is the **'Details'** window. Here you can add a description to your Intelligent Mini, alter your password settings, view your loggers temperature range, add high and low alarm settings, change temperature scale (°C or °F) and set the number of readings before an alarm is raised. After entering the relevant details click **'Next'**.



- The next window to appear is the **'Summary'** window. Here you are given a brief summary of the condition in which you have programmed your logger with.

Note: In this screen your logger's battery status is displayed if your logger has an insufficient battery life for its trip duration your software will not allow the logger to be programmed.



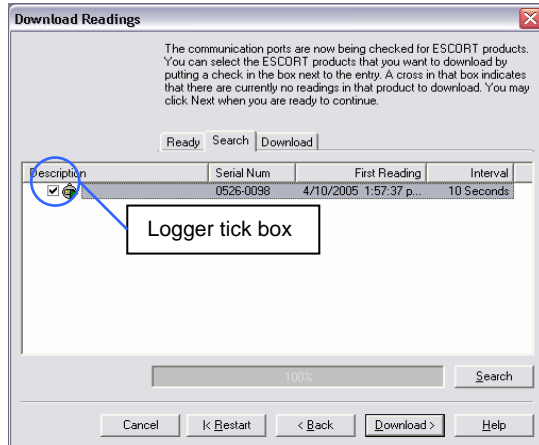
8. DOWNLOADING A Intelligent Mini

- Start your computer and open your ESCORT Console software by selecting the ESCORT Console icon located on your desktop, or via the following menu options **START > ALL PROGRAMS > ESCORT > CONSOLE**.
- Select the Download icon from the Console taskbar, or select **Action > Download** from the dropdown menu or **Control + D**.



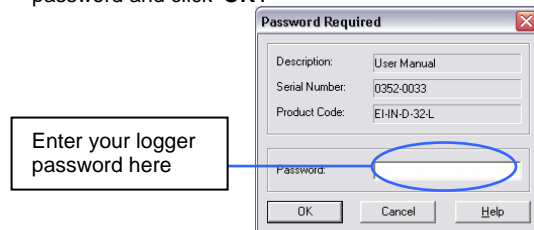
Download icon

- The Download wizard will open and an information screen will appear. Click **'Next'**.
- The next screen to appear is the search screen. If your logger is password protected the tick box will be empty. Select the tick box and the password window will appear. If the tick box is already checked click **'Next'** (see next page).

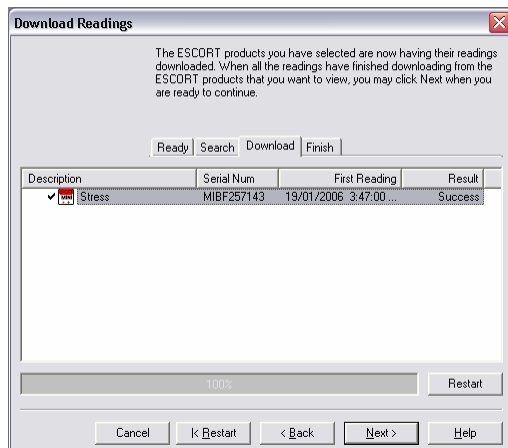


Logger tick box

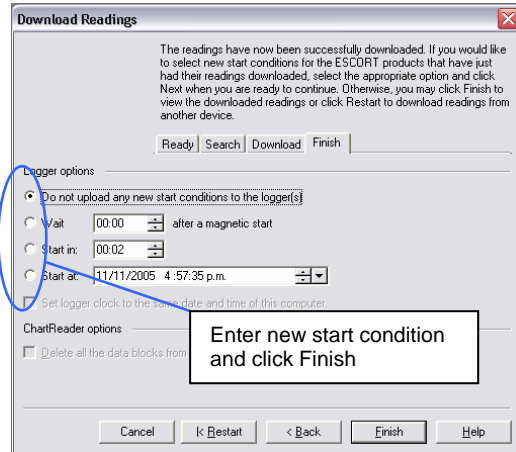
- If your logger is password protected, enter the correct password and click **'OK'**.



- The next screen to appear is the Download screen. Check that your logger details displayed within this screen are correct and click **'Next'**.



- The next screen to appear is the Finish screen. Here you can enter new start conditions. After entering the relevant start conditions click **'Finish'**.



9. PRINTING A FILE

- Select the Print icon from the Console taskbar, or select **File > Print** from the dropdown menu or **Control + P**.



Print icon

- If you have several printers to choose from or want to change your printing preferences (e.g. change your printing layout from portrait to landscape), select **File > Print Setup** or **Control + R**.
- To preview the layout of the file you are about select **File > Print Preview** or **Control + V**.

10. SAVING A FILE

- Select the Save icon from the Console taskbar, or select **File > Save** from the dropdown menu or **Control + S**.



Save icon

- If required to save additional copies of a file select **File > Save As** from the dropdown menu or **Control + A**.

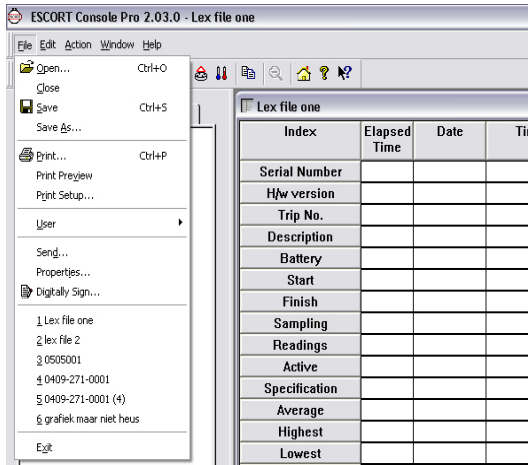
11. OPENING A SAVED FILE

- Select the Open File icon from the Console taskbar, or select **File > Open** from the dropdown menu or **Control + O**.



Open icon

- The six most recently opened files are saved in a list located at the bottom of the file menu. You can open these files by selecting the correct filename from this list.



FURTHER INFORMATION

For further information please contact your local distributor or visit our website www.escortdls.com